



Indy Arts Leaders Meetup

APRIL 7, 2026

Indiana Repertory Theatre





Welcome

**Thank you to our host,
Indiana Repertory Theatre!**

Agenda

- 01 NETWORKING & REFRESHMENTS
- 02 WELCOME & IRT REMARKS
- 03 INDY ARTS COUNCIL UPDATES
- 04 HEALTH COVERAGE RESOURCES





**INDIANA
REPERTORY
THEATRE**

—



INDY ARTS COUNCIL UPDATES



Photo: Mike Lee Productions

SWISH Arts & Culture Festival

- 70K+ visitors to Indy
- 200+ local artists, performers, and vendors featured across 4 days
- 27.3K page views (as of April 5)
- 463.8K social media views
- 30+ earned media mentions



City Advocacy

INDY ARTS COUNCIL

THROUGH SUMMER:

- Individual meetings with councilors
- Meetings with Mayor re: 2027 budget
- Bond Bank and CIB presentations

AUGUST: Budget is introduced

SEPTEMBER: Public meeting and comment

OCTOBER: Budget is finalized

ARTS COMMUNITY

NOW & ALWAYS: Build relationships with your counselors through meetings, events, letters

TBD: Additional public comment opportunities

SEPTEMBER: Public meeting and comment



Federal Advocacy

PRESIDENT'S PROPOSED FY27 BUDGET

April 3, 2026

Minimal funds in order to close:

- National Endowment for the Arts
- National Endowment for the Humanities
- Institute of Museum and Library Services

Congress negotiates and passes the federal budget. These agencies still enjoy bipartisan support.

Watch [ArtsActionFund.org](https://www.ArtsActionFund.org) (Americans for the Arts)

Reach out to your members of congress



Fundraising Workshop

Principles & Techniques of Fundraising for Arts Nonprofits

APRIL 13-15, 2026 @ NEWFIELDS

- **\$150 per person (max 2 per organization)**
- **Financial assistance available**
- **CFRE credit available**



REGISTER



Mini-Series: Financial Sustainability

Financial statements 101:

Demystifying nonprofit numbers

JUNE 18, 10-11:30 am

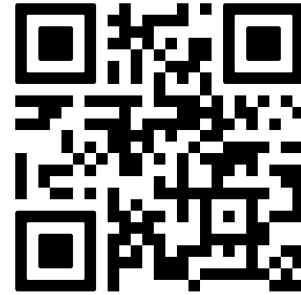
Red Flag, Yellow Flag:

Monitoring Nonprofit Financial Health

JUNE 25, 10-11:30 am

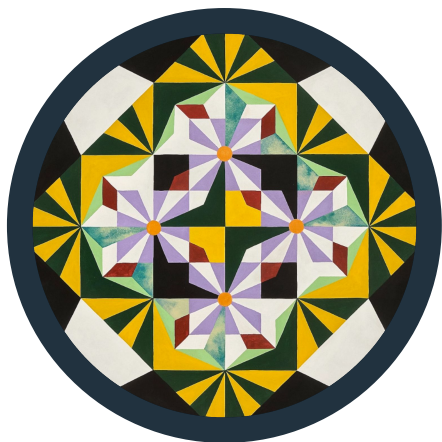
FIRST MERCHANTS CONFERENCE CENTER

8711 RIVER CROSSING BLVD, INDIANAPOLIS



REGISTER





Upcoming Meetings

- **Arts Education Forum**
April 27 at 16 Tech
Supporting Indianapolis Public Schools
- **Arts Leaders Meetup**
June 9 at Hendricks Live!
Breakout Groups
- **Arts Marketers Meetup**
June 11 at Arts for Lawrence
What's Working Where: Content and Platforms





Photo: PATTERN

Breakout Groups

- Self-directed, open to all topical or based on common interests
- **June 9 at Hendricks Live!** and **October 6, 10-11:30 at IF Theatre** (Breakout groups ~10:40-11:30)
- A few ideas:
 - Activating downtown events
 - Marketing collaborations
 - Theatre audience development
- **Other ideas?**



ARTS LEADERS MEETUPS

ARTS MARKETERS MEETUPS

INDY ARTS EDUCATION FORUM

PROFESSIONAL DEVELOPMENT

10 - 11:30 A.M. | IN PERSON

Indy Arts Leaders Meetups are bimonthly convenings focused on connecting and supporting arts and culture organization staff and board members.

Our 2026 meetups will take place 10 – 11:30 a.m. at various arts venues around the region.

**February 10 @ Polklore
Micro-Museum** 2026 Arts Organization Services [VIEW SLIDES](#)

**April 7 @ Indiana
Repertory Theatre** Affordable Healthcare Options [REGISTER](#)

June 9 @ Hendricks Live! Affinity Groups

August 11 @ Indy Ballet DEI Briefing from Ice Miller

October 6 @ IF Theatre Affinity Groups

**December 10 @ 10 East
Arts** Topic announced soon!



Upcoming Grants

CREATIVE RENEWAL ARTS FELLOWSHIP

Application opens in **June**

ART & SOUL ACTIVATION GRANTS (2027)

Application opens in **September**

ANNUAL GRANTS PROGRAM

Application opens in **December**
(tentative)



Questions?





HEALTH COVERAGE RESOURCES

—

HEALTH AND WELLBEING

Healthcare and Health Insurance Resources

Learn More

ARTS ORGANIZATION RESOURCES

Mental Health Resources in Central Indiana

Learn More



HEALTH INSURANCE AND WELLNESS SUPPORT FOR ARTISTS AND ARTS WORKERS | WEBINAR

Download Slides →

indyarts.org/wellness



Find a Health Insurance Plan



Talk to a Navigator

Show up at a Federally Qualified Health Center

Reach out to a professional Navigator
(localhelp.healthcare.gov)



Marketplace healthcare.gov

aka “Obamacare” or “the exchange”

Private insurance plans + subsidies



Insurance Broker

Lists available at healthcare.gov and localhelp.healthcare.gov.





Indiana Nonprofit Benefits Trust

A MEWA for Indiana Philanthropy Alliance members.





Indiana Nonprofit Benefits Trust



What is a MEWA?

ERISA defines a multiple employer welfare arrangement – it is a type of plan that allows unrelated employers (not part of the same control group) to participate in a pooled arrangement.

Can be fully insured or self-funded

- **Self-funded MEWAs are highly regulated by many states, and are prohibited in some states**

Generally requires participating employers to share a commonality of interest - a “work related common bond”

What is a MEWA?

Advantages:

- **Allows smaller employers to avoid community rated plans, particularly if the employer has a healthy population**
- **Pools risk with other small employers, allowing for more stable renewals**
- **Allows access to larger market solutions and creativity within plan, particularly if self-funded**

Disadvantages:

- **If a MEWA is self-funded, significant additional administrative steps are required, including state regulatory approval, establishment of a trust, placement of a fidelity bond, annual reporting**
- **Multi-state employers face state regulatory roadblocks**

Unique Advantages for Indiana Nonprofits

Stronger Together

Best-in-class partnership offering a nonprofit industry-specific medical plan solution

Cost Efficiency

Group-rated benefits within a MEWA structure with potential for lower, more stable healthcare costs



Simplified Administration

Included access to Employee Navigator online enrollment tool for easy administration and enhanced employee experience

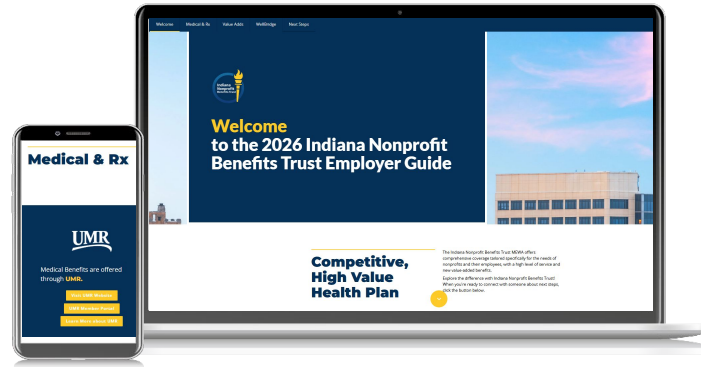
Modern Communication

Digital employee communication tools to meet your employees where they are

Administrative and Employee Experience



Easy Online Enrollment



Digital Member + Employer Guide

Introducing our Partners



Overall benefits strategy and individual client account management



Claims processing and network



Fiduciary oversight and MEWA creation



Pharmacy benefit management

Plan Accountant

**Ann Cottongim
Financial tracking**

Employer Requirements

- **Indiana-domiciled nonprofit**
- **Member of the Indiana Philanthropy Alliance**
- **Minimum of 2 subscribers**
- **Minimum of 50% participation of eligible employees***
- **3-year participation agreement**

**Valid Waivers may count toward participation requirement*



Our Members





Contact Us

INNonprofitTrust@nfp.com



NFP, an Aon Company

8900 Keystone Crossing, Suite 900

Indianapolis, Indiana 46240





© 2026 NFP Corp. All Rights Reserved **nfp.com**

NFP Corp. (NFP) provides, through licensed affiliates and personnel, insurance brokerage and consulting products and solutions through our Risk Capital (property and casualty) and Human Capital (employee benefits, retirement, and life insurance) divisions, to clients across the U.S. and abroad. Securities may be offered through Executive Services Securities, LLC, member FINRA/SIPC, an affiliated company and NFP subsidiary, or Kestra Investment Services, LLC (Kestra IS), member FINRA/SIPC, a non-affiliated company of NFP. Investment Advisory Services may be offered through non-affiliates of NFP, to include Kestra Advisory Services, LLC (Kestra AS) an affiliate of Kestra IS and Wealthspire Retirement, Inc. (Kestra and Wealthspire are not affiliated with each other). Insurance services offered through a licensed subsidiary of NFP) or a member of PartnersFinancial an independent insurance platform of NFP Insurance Services, Inc. (NFPISI), an NFP subsidiary. ESS is affiliated with NFP and NFPISI. Neither Kestra IS nor Kestra AS are affiliated with NFP or NFPISI. Kestra Investor Disclosures may be found here: <https://bit.ly/KF-Disclosures>.



ChamberCare

A MEWA for Indy Chamber and Indiana Chamber members.





CHAMBERCARE

Indy Arts Leader Meetup
April 7, 2026

PRESENTED BY



OUR PARTNERS



CHAMBERCARE



ChamberCare Basics

- Launched in 2019
- MEWA (multiple employer welfare arrangement)
- Governed by the Chamber Benefit Arrangement of Indiana Trust
- Available to employers with 2-50 employees
- Fully-insured/self-funded – best of both worlds
 - Predictability of fixed monthly premiums
 - Stop Loss coverage to manage catastrophic risk
 - Excess funds stay with the Trust, not the carrier

CHAMBERCARE



Our Core Value Proposition

A competitive, accessible health care offering with unique advantages for small businesses



Cost-Effective Rates

Rates similar to large groups, underwritten for the small group market



Flexible Benefits

Designed for local, small business employees



Stable Costs

Built-in stop loss coverage and fixed monthly payments



Financial Protection and Stability

Cost advantages and lower than market-average renewals



Power of Partnership

Brokers, employers and local health systems



Simplified Healthcare

Ease of use

CHAMBERCARE



Highlights

- Nearly 7 years of proven success
- Strong network coverage in Indiana and beyond.
- Hoosiers helping Hoosiers. Indiana-based member services team
- Impactful Rx programs – free or greatly reduced prescriptions
- Best-in-class dental and vision coverage through Delta/VSP
- Dedicated focus on affordability, stability, transparency

SIHO INSURANCE SERVICES

We inspire **healthier** members by connecting **high-quality** care to **innovative** insurance solutions so that our members can **pursue** their **best** lives.

Headquartered in Columbus, Indiana, with satellite offices in Seymour, Indianapolis, and Evansville.

Established in 1987 through the cooperative effort of local physicians, hospitals, and employers who were concerned with about the rising cost of health care.

Over 220 Employees who, by in large, work and live in Indiana, with some who live outside of Indiana.

Customized and Flexible plan administrator with numerous privately-branded products

CHAMBERCARE

Digital Guide: ChamberCareHealth.com



The screenshot shows the ChamberCare website homepage. The navigation bar includes: Welcome, Medical & Rx, About SIHO, Dental & Vision, Value Adds, Next Steps, and Wellbridge Surgical. The main content area features the ChamberCare logo, a welcome message for the 2025-2026 Employer Guide, and a section titled "This Competitive, High-Value Health Plan Is Better Than Ever!". The text describes the ChamberCare MEWA offering and lists partners: SIHO, Insurance Services, CVS Caremark, and Delta Dental. A yellow button labeled "Get Started with ChamberCare" is at the bottom right. Logos for Indiana Chamber and Indy Chamber are in the bottom left.

Welcome

Medical & Rx

About SIHO

Dental & Vision

Value Adds

Next Steps

Wellbridge Surgical

CHAMBERCARE

Welcome to the 2025-2026 ChamberCare Employer Guide

Brought to you by:

INDIANA CHAMBER

INDY CHAMBER

This Competitive, High-Value Health Plan Is Better Than Ever!

The ChamberCare MEWA offers comprehensive coverage for small employers (with 2 to 50 employees), with a high level of service and new value-added benefits.

ChamberCare partners with Indiana-based [SIHO Insurance Services](#) for health benefits, [CVS Caremark](#) for pharmacy offerings and [Delta Dental](#) for dental and vision coverage.

Explore the ChamberCare difference! When you're ready to connect with someone about next steps, click the button below.

Get Started with ChamberCare



Your one-stop shop for all things ChamberCare, including plan options, network details, dental/vision plans and more!



VIRTUAL CARE

- **24/7 General Telehealth (acute issues)**
- **Primary Care (ongoing care)**
- **Behavioral Health**
- **Physical Therapy**

with Indy Arts Council
indyarts.com/wellness





with Indy Arts Council
indyarts.com/wellness

DISCOUNTS

- **Dental**
- **Vision**
- **1,400 \$0 prescriptions, plus discounts on others**





ADVOCACY

- **Questions about care**
- **Scheduling assistance**
- **Finding affordable options**
- **Organize and investigate bills and claims**

with Indy Arts Council
indyarts.com/wellness





with Indy Arts Council
indyarts.com/wellness

SUBSCRIBE THROUGH INDY ARTS

- **Monthly subscription via Indy Arts Council (\$20 or \$38 per month)**
- **Can be used with or without health insurance**
- **Extends to spouse and legal dependents**
- **Cancel anytime**



Questions?

INNonprofitTrust@nfp.com

membershipsupport@indianachamber.com

atragesser@indyarts.org



Thank you!

June 9 | 10–11:30 AM
at Hendricks Live!

